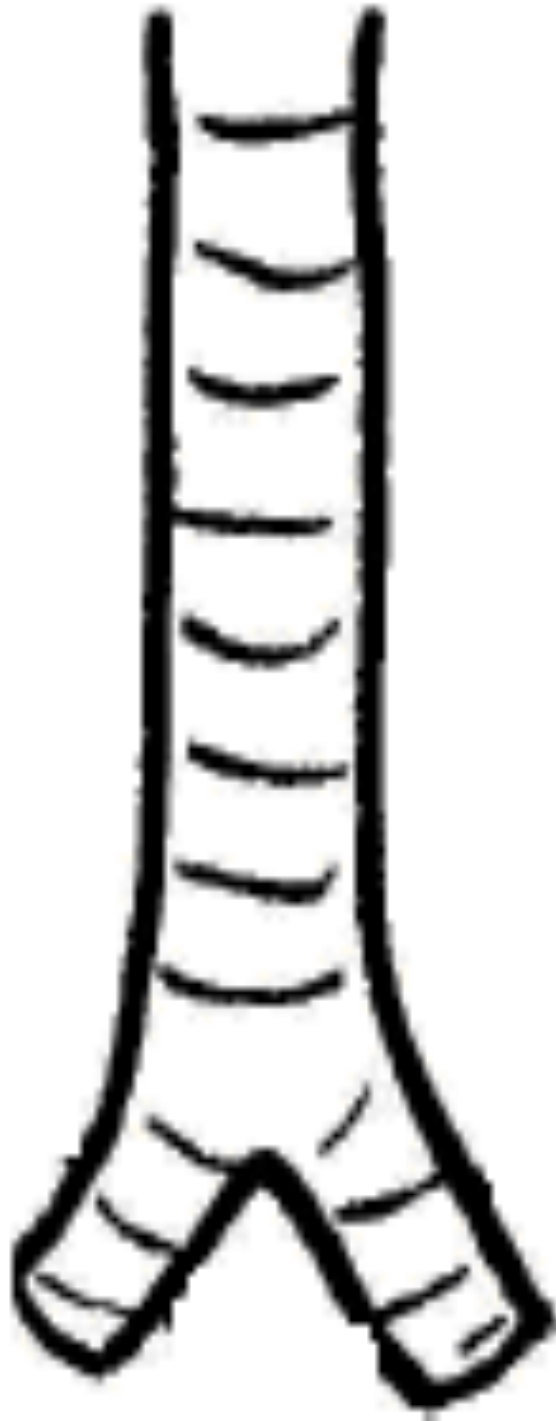
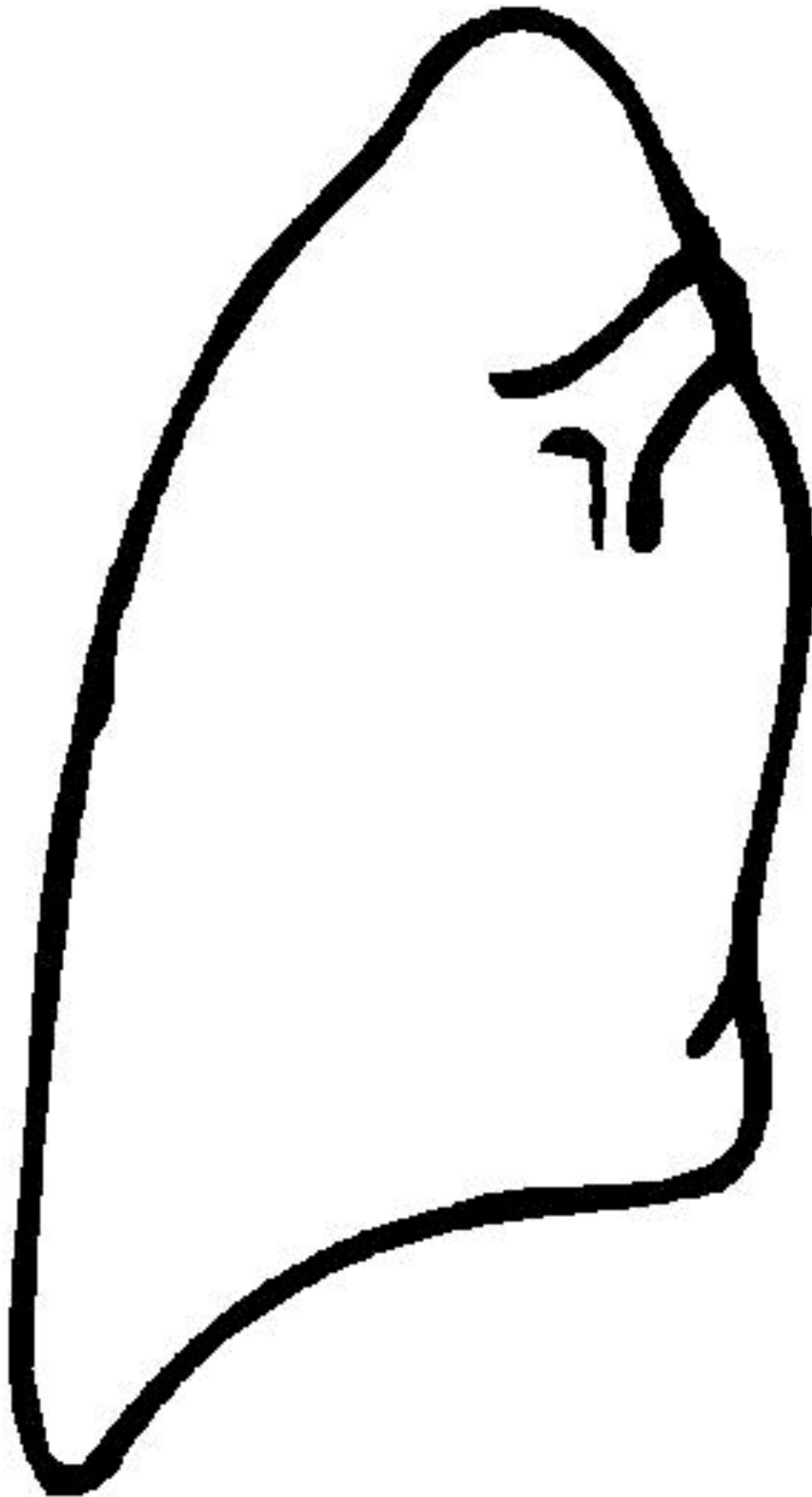


LIFE SIZE CUT OUTS

Respiratory (trachea and lungs)

Trachea



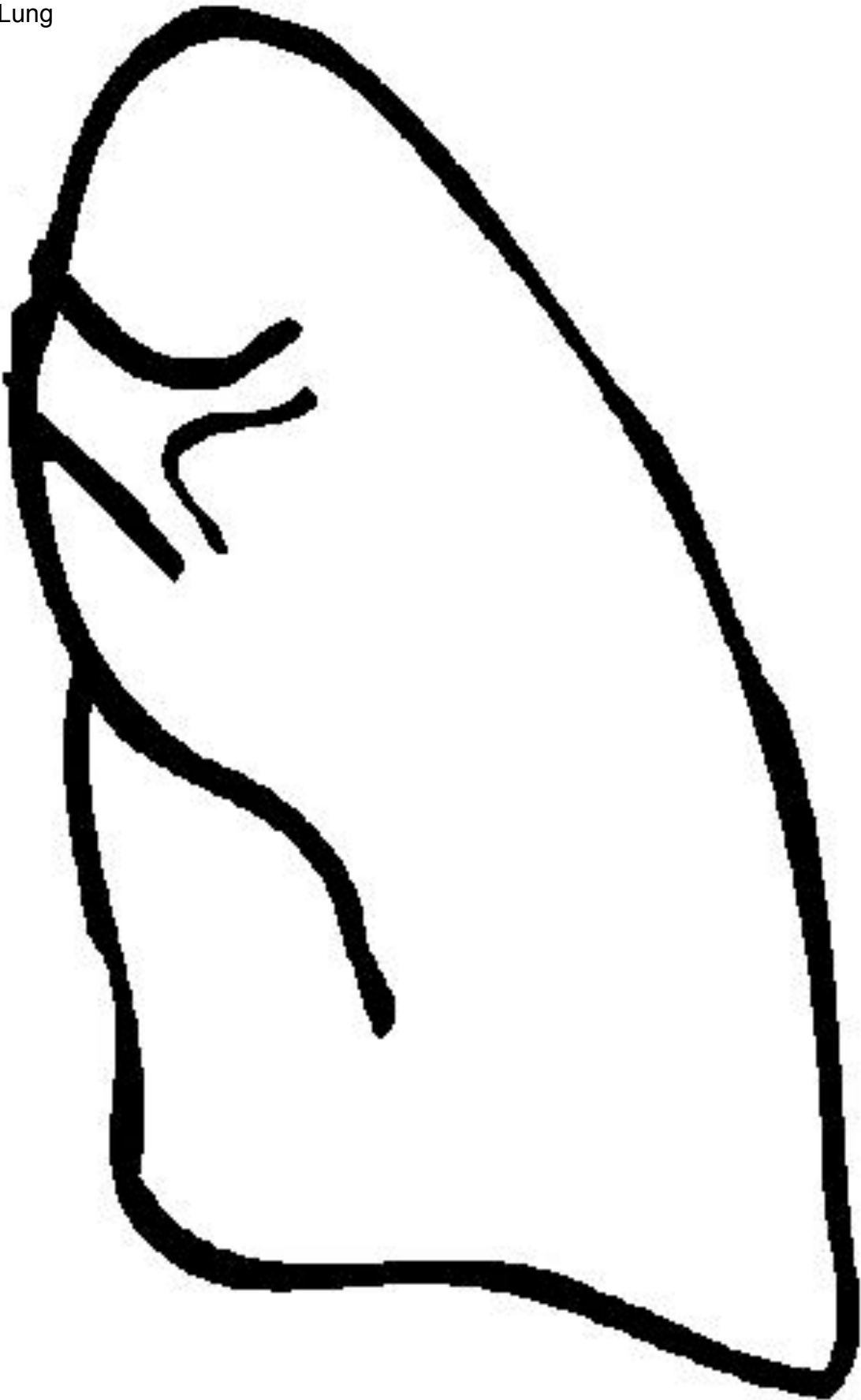


Right Lung

5.E Formative Assessment #4

*SCIENCE MATTERS

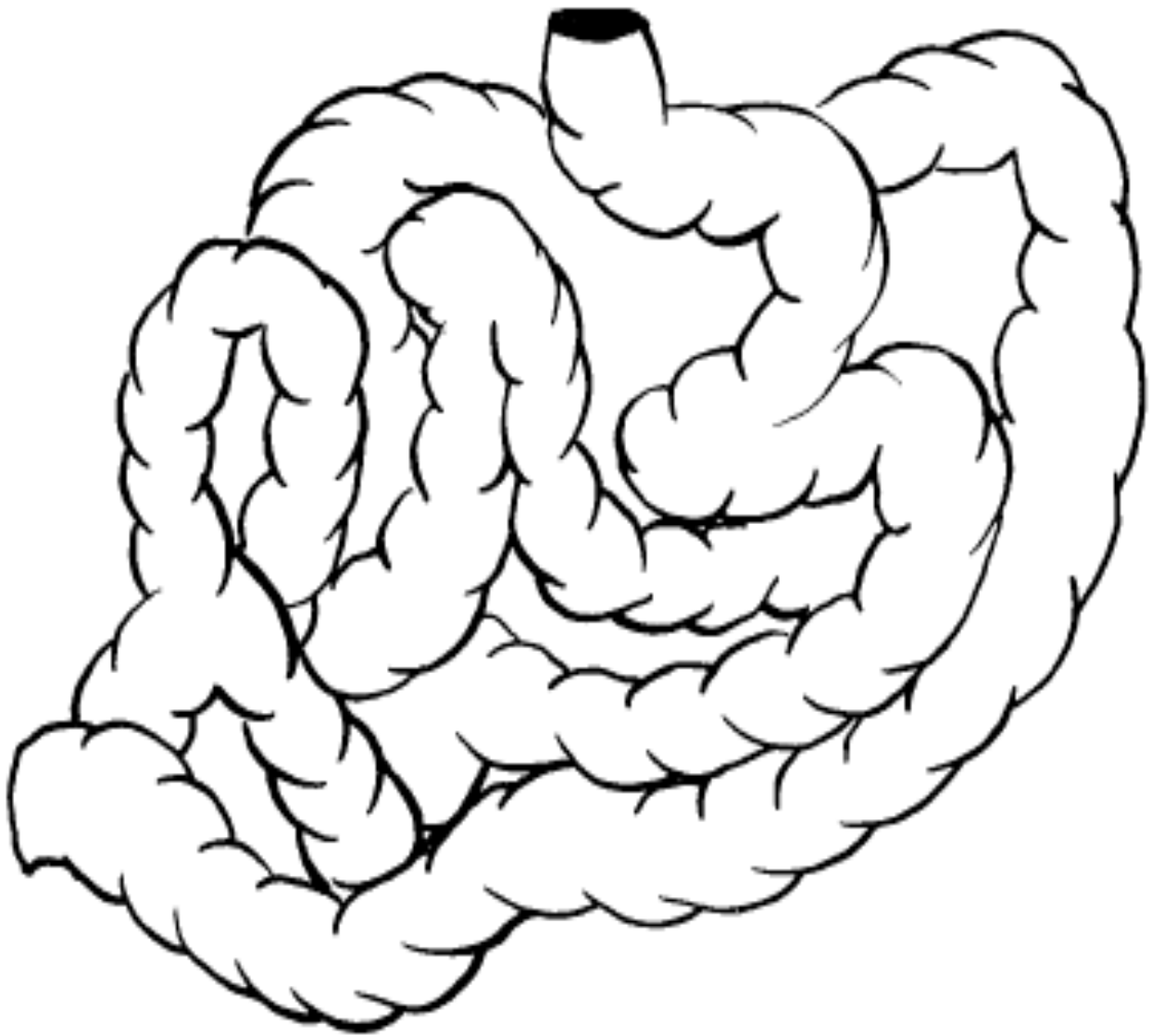
Left Lung



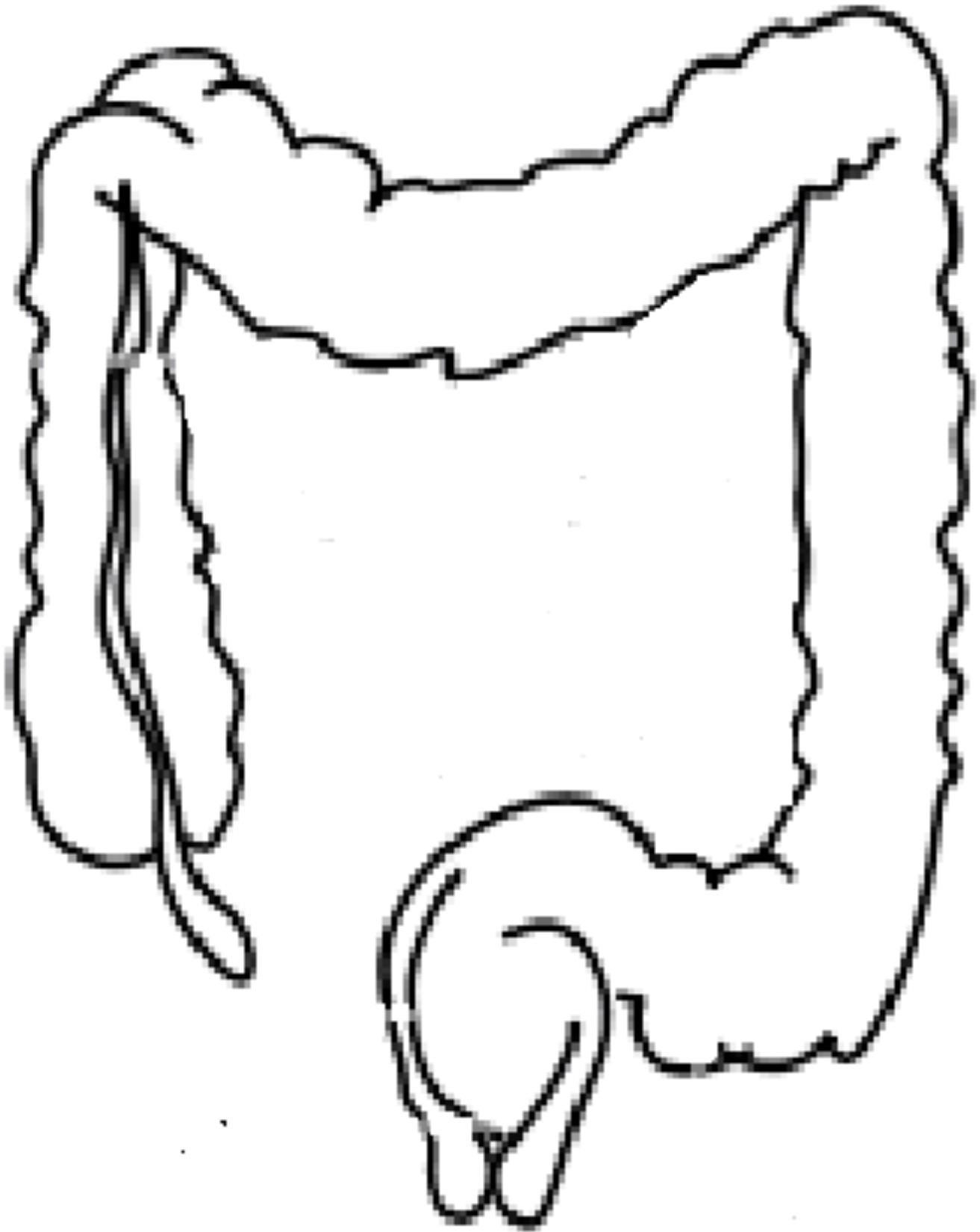
Esophagus



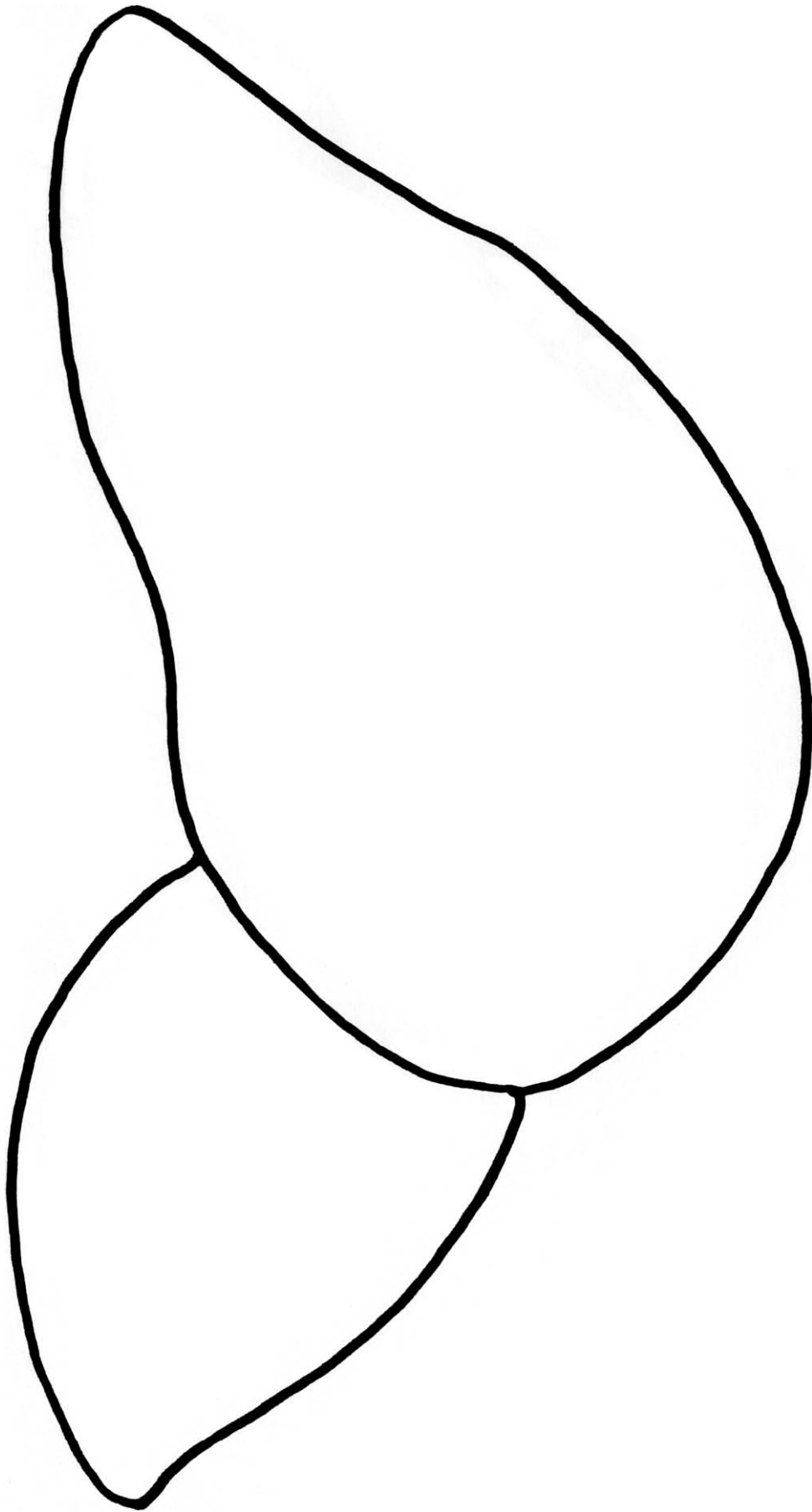
Small Intestine



Large
intestine



Rectum/Anus

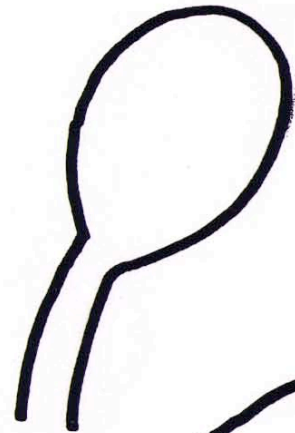


Liver

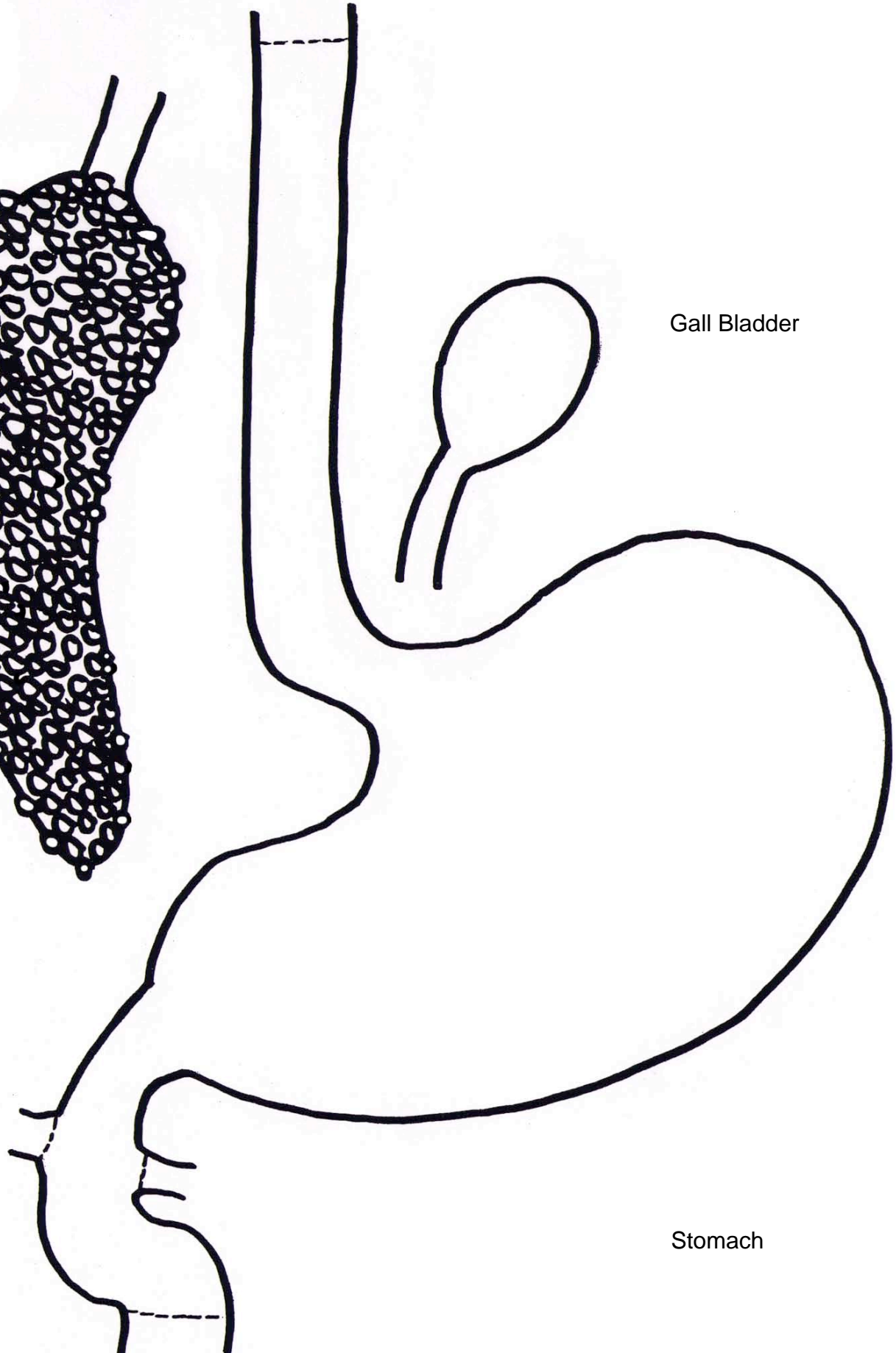
Pancreas



Gall Bladder



Stomach



Circulatory system (students need to draw arteries and veins)

Heart

